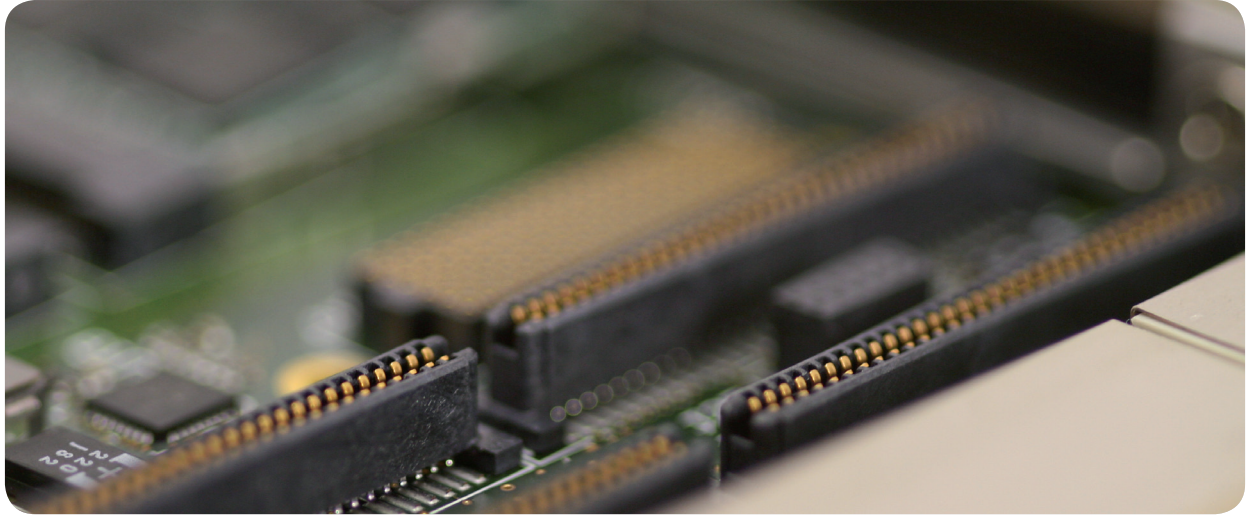


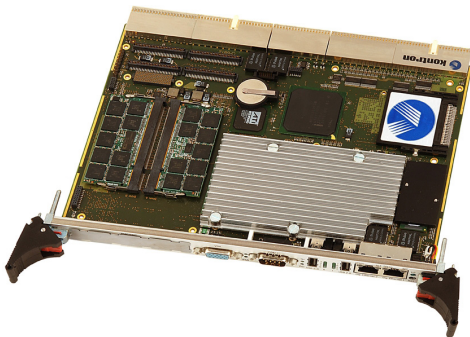
» Application Story «

CompactPCI in Transportation



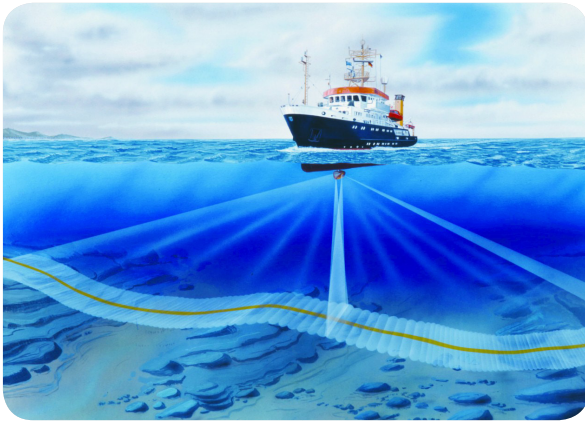
It's all in the Ping

Robust multi-core technology for more accurate and faster mapping of the sea floor



Rugged 6U CompactPCI multi-core computing technology from Kontron based on the PICMG 2.16 standard enables ATLAS Hydrographic Echosounder to generate more detailed and more accurate bathymetric maps at a faster rate.

Modern hydrographic technology enables marine researchers to explore and map the oceans' depths in greater detail than ever before. It also has commercial applications, helping oil and gas companies locate undiscovered natural resources and lay pipelines and cables cost-effectively and with minimum disruption to the environment. Moreover, surveillance of continental slopes, rifts and ridges provides vital information for disaster management. All of these sectors require high-availability systems that produce detailed hydrographic information captured in the most cost-effective and efficient way. This is why ATLAS Hydrographic, one of the leading suppliers of hydrographic systems, is taking advantage of the latest rugged CompactPCI multi-core technology to produce bathymetric maps with unprecedented levels of detail and accuracy in the shortest time.



*Figure 1:
Multibeam echo sounders send out a sheet of sound either side of the ship.*

Sounding out the ocean depths

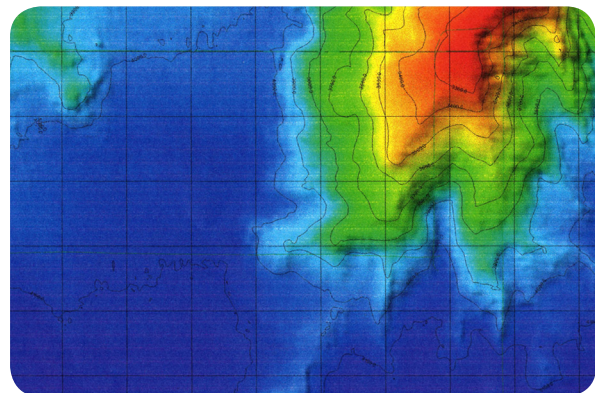
Hydrographic systems use echo sounding to create maps of the seabed. An array of transducers is mounted on the hull of a ship that traverses the area to be surveyed. The different ATLAS HYDROSWEET multi-beam echosounder systems each have up to 12 x 144 multi channel transducer modules arranged in a precise geometrical pattern. Each transducer element sends out a sound pulse, or 'ping', creating a sheet of sound that covers a large area to the right and the left of the ship. The returning signals are processed by an onboard computer to produce detailed bathymetric maps.

CompactPCI: Combining performance, ruggedness and reliability

Systems that generate more detailed and more accurate maps have a competitive advantage. The recently upgraded ATLAS HYDROSWEET DS – one product of the ATLAS HYDROSWEET product family - now processes up to 1.8 million digital amplitude signals per second instead of the previous 0.9 million samples – an increase of 100 percent. It also enables survey vessels to cover a wider seabed area in the same period of time (e.g. now 5.5. times the water depth coverage compared with the previous 3.5 times water depth coverage - an increase of 60%).

At around 20,000 Euro for every day a ship spends at sea, the financial savings are considerable. Central to boosting the system's performance are its high-performance 6U CompactPCI CPU boards from Kontron. System designs based on the established PICMG 2.x CompactPCI standard are ideal for the type of rugged conditions found at sea. Their robust connectors, metal guides and metal front plate hold the highly integrated boards firmly in place inside the mounting cabinet. The electronic connectors are also robust, providing a board design that is inherently resistant against the vibrations and shocks that occur on board a survey vessel. And since the chosen CompactPCI boards are designed for use in a wide range of environmental temperatures, they easily cope with the extensive temperature ranges under which survey vessels operate – from arctic to tropical waters.

In order to find the right balance between ruggedness, temperature range and performance requirements, ATLAS Hydrographic selected two Kontron CP6012 CompactPCI CPU blades equipped with Intel® Core™ Duo 2 x 2.0 GHz processors and 4 GB of dual channel 400 MHz DDR 2 RAM. Especially designed for bandwidth intensive applications, the robust Kontron boards enable the HYDROSWEET to reliably operate at a higher ping rate for processing more information in a shorter period of time.



*Figure 2:
The Kontron CP6012 CompactPCI blades enable the ATLAS HYDROSWEET system to generate more accurate and more detailed bathymetric maps. (Picture generated from data acquired by the ATLAS HYDROSWEET in the Bay of Biscay).*

The ATLAS HYDROSWEEP DS

The boards are located at the heart of the system's DEU (Digital Electronic Unit). Before the signals reach the Kontron boards, the returning analog sound pulses are converted into digital samples by the system's AEU (Analog Electronic Unit). This unit also performs pre-processing operations on the data to reduce it from 10 million to 1.7 million amplitude samples per second.

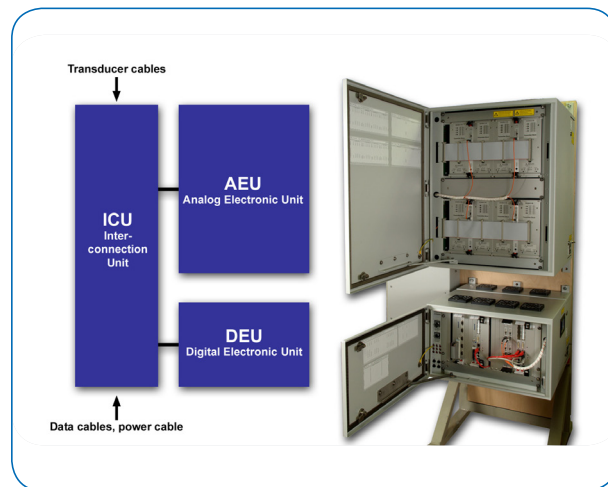


Figure 3: The ATLAS HYDROSWEEP DS system.

The digital signals are forwarded via Ethernet at a rate of up to 13.6 MB per second (1.7 million signals @64 bits per signal) to the first CP6012 which performs specific DSP (Digital Signal Processing) routines running on the board under embedded Linux. A point-to-point Ethernet connection then transfers the processed data to the second CPU board where the "Higher Order Beamforming" software applies complicated filter and feature recognition algorithms to the incoming data and provides water depth measurement results at a high resolution and accuracy. Atlas Hydrographic wrote the software that runs on the CP6012 under Windows XP. Once processed, the depth information is transmitted via the board's second GBit Ethernet port to a post processing workstation where the maps can be displayed and edited by an operator. The information is also stored on a 2.5 inch hard drive connected to the CP6012's SATA interface. The same CP6012 board also controls the entire Atlas HYDROSWEEP system. It receives and executes operator commands from PC terminals connected via Ethernet and automatically controls the HYDROSWEEP's intelligent subsystems which are also connected via Ethernet as well as via the board's serial ports. For easy servicing and maintenance, engineers are able to access the

system directly with keyboard and mouse via the CP6012's USB 2.0 ports. A monitor can be directly connected to the VGA interface. For Atlas, it was important to find a supplier who could deliver processor boards that met all of their demands: "Kontron was one of the first manufacturers to offer a board which fulfilled all of our requirements on performance, temperature range, ruggedness and I/Os," explains Joachim Reuter, Technical Project Manager of Atlas Hydrographic. "The Kontron CPU boards enable our new HYDROSWEEP to reliably capture and process more information than was previously possible. We can now offer our customers a system that generates more detailed and accurate maps. In shallow water ships are also able to traverse and survey an area at greater speed which results in financial savings for our customers."

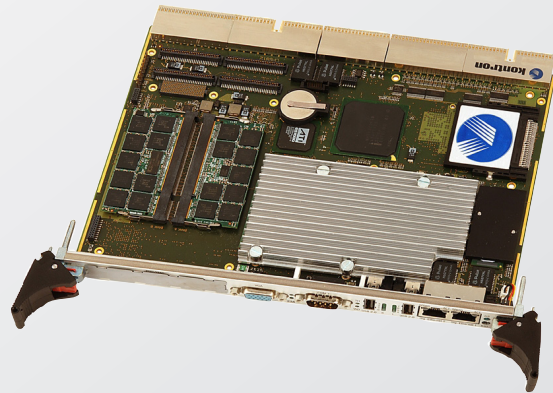
System users also benefit from the impressive power/watt ratio of the multi-core technology that provides approximately double the performance of a single core processor at similar power consumption and at a TDP of only 31 Watts. As a result, the CP6012 also reduces the burden on system cooling when operating under hot environmental conditions.

As well as supplying the CP6012 CPU blades, Kontron also supplied Atlas Hydrographic with a test system for the early stages of the project. "Based on the great cooperation and support we received during this project, we will continue to choose Kontron products for our future projects", concludes Joachim Reuter.

Kontron's CP6012: CompactPCI 6HE Board with Intel® Core™ (2) Duo Processor

The Kontron CP6012 is a 6U CompactPCI CPU board CP6012 with Intel® Core™ Duo processor T2500 (2 GHz) that meets the highest performance demands. The PICMG 2.16-compliant Kontron CP6012 is designed for bandwidth-intensive applications and, thanks to hot-swap support and IPMI (PICMG 2.9-compliant Intelligent Platform Management Interface) meets the highest demands for the management of high-availability applications. Thanks to its robust construction it is ideal, for example, for image processing systems in a variety of vertical industries. Alternatively, Kontron's CP6012 is available with a 1.66 GHz (LV Intel® Core™ Duo processor) or the Intel® Core™ 2 Duo processors T7400 (2.16GHz) and L7400 (1.5GHz) Kontron's CP6012 offers a high degree of integration and the latest interface technologies such as PCI Express, up to 4 GB/400 MHz DDR2 SODIMM RAM (6.4 GB/sec throughput) and a fast Serial-ATA hard drive interface or CompactFlash slot on board. Four Gigabit Ethernet interfaces via PCI Express (two to the backplane / two front-side), max. 4xUSB

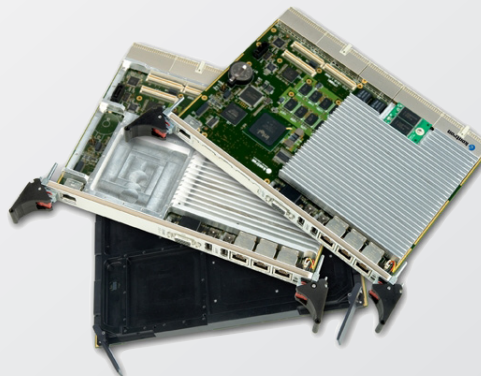
2.0, 2xCOM, VGA, PS/2, PMC/XMC slot and rear I/O support round off the feature set. Software support is offered for Linux, Windows XP, XP embedded, VxWorks and Windows Server.



The Kontron CP6001: CompactPCI CPU Blade in three rugged levels

For applications that need to withstand even tougher environmental conditions, the passively cooled Kontron CP6001 featuring up to 4GB of soldered RAM and soldered application flash comes in three rugged levels, defined as R1, R2 and R3. All three versions are available with E2 capabilities (extended temperature range from -40° C to + 85° C). The R1-version is designed for standard application requirements in air-cooled environments. The R2-version is ruggedized for high shock and vibration environments in accordance with the VITA 47 EAC3 specification. The R3-version is fully conduction cooled and meets VITA 47's ECC4 requirements. These three versions make the Kontron CP6001 an ideal partner for the fully managed Kontron CP6923 PICMG2.16 Ethernet switch board, which also comes in the R1, R2- and R3 rugged levels. Together, these

6U CompactPCI boards provide a cost-effective alternative for rugged, high demand systems in a variety of markets, including maritime, military and aerospace.



About Kontron

Kontron designs and manufactures standards-based and custom embedded and communications solutions for OEMs, systems integrators, and application providers in a variety of markets. Kontron engineering and manufacturing facilities, located throughout Europe, Americas, and Asia-Pacific, work together with streamlined global sales and support services to help customers reduce their time-to-market and gain a competitive advantage. Kontron's diverse product portfolio includes: boards and mezzanines, Computer-on-Modules, HMIs and displays, systems, and custom capabilities.

Kontron is a Premier member of the Intel® Embedded and Communications Alliance.

For half-a-decade now, Kontron has been named a VDC *Platinum Embedded Board Vendor*. Based entirely on user feedback, industry professionals evaluate vendors on over 45 non-product related criteria. Kontron is only one of two companies to receive the Platinum award 5-years running.

Kontron is listed on the German TecDAX stock exchange under the symbol „KBC“.

For more information, please visit: www.kontron.com

CORPORATE OFFICES

Europe, Middle East & Africa

Oskar-von-Miller-Str. 1
85386 Eching/Munich
Germany
Tel.: +49 (0)8165/ 77 777
Fax: +49 (0)8165/ 77 219
info@kontron.com

North America

14118 Stowe Drive
Poway, CA 92064-7147
USA
Tel.: +1 888 294 4558
Fax: +1 858 677 0898
info@us.kontron.com

Asia Pacific

17 Building,Block #1,ABP.
188 Southern West 4th Ring Road
Beijing 100070, P.R.China
Tel.: + 86 10 63751188
Fax: + 86 10 83682438
info@kontron.cn

